

## CONTACTS

For any request : [hcl\\_crb@chu-lyon.fr](mailto:hcl_crb@chu-lyon.fr) or <https://recherche.chu-lyon.fr/crb>

Administrative director : Théo PIOLIN

Scientific coordinator : Pr Alexandra TRAVERSE-GLEHEN

## CRB EST

### CBC BioTec : Cell lines

Medical manager : Pr Laurent SCHAEFFER

Biobank manager : [isabelle.rouvet@chu-lyon.fr](mailto:isabelle.rouvet@chu-lyon.fr)

Phone : 04 72 12 97 01

### NeuroBioTec : Biological fluids

Medical manager : Pr Romain MARIGNIER

Biobank manager : [nathalie.dufay@chu-lyon.fr](mailto:nathalie.dufay@chu-lyon.fr)

Phone : 04 72 68 49 02

### Tissu-Tumorotheque Est : Tumoral and non-tumoral tissues

Medical manager : Dr Valérie HERVIEU

Biobank manager : [corinne.perrin@chu-lyon.fr](mailto:corinne.perrin@chu-lyon.fr)

Phone : 04 72 12 96 03

## CRB NORD

### Infectious diseases

Medical manager : Dr Alexandre GAYMARD

Biobank manager : [hugo.brugaliere@chu-lyon.fr](mailto:hugo.brugaliere@chu-lyon.fr)

Phone : 04 72 00 37 78

## CRB SUD

### Tumoral / hematological / autoimmune pathologies

Medical manager : Pr Alexandra TRAVERSE-GLEHEN

Biobank manager : [charlotte.lacroix@chu-lyon.fr](mailto:charlotte.lacroix@chu-lyon.fr)

Phone : 04 78 86 41 14



For more information

© HCL-DRS/CRB/DMC - PAO : TP - 04/25



**HCL**  
HOSPICES CIVILS  
DE LYON

LA  
RECHERCHE

**HOSPICES CIVILS DE LYON  
BIOBANK**

HCL BIOBANK / CRB HCL



ISO 20387

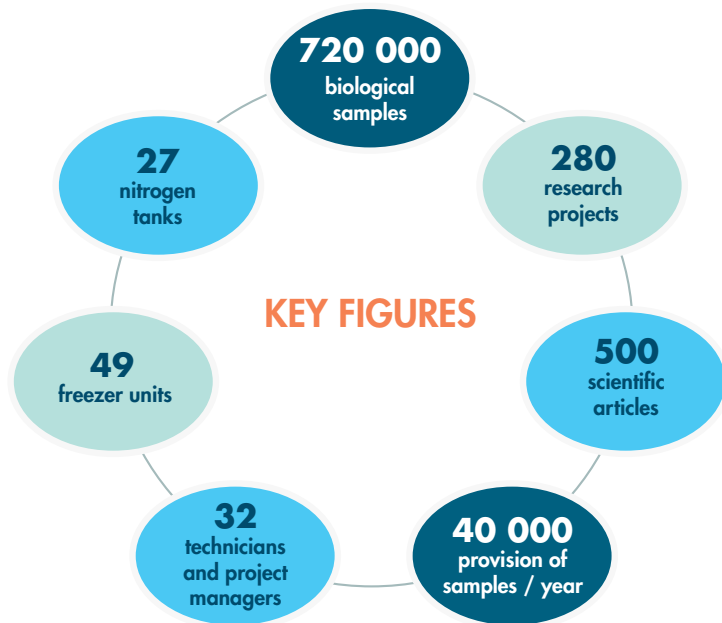


## THE HCL BIOBANK (CRB HCL)

The Hospices Civils de Lyon biobank (HCL Biobank / CRB HCL) is **a multi-site research support platform and biorepository**.

Supervised by the HCL's Health Research department, it currently brings together **five biorepositories specialized** on a wide variety of medical themes.

Certified ISO 20387, its mission is to collect, prepare, preserve and provide high-quality biological samples, associated with traceability and clinical-biological data, for research projects.



## OUR THEMES

Located within the second largest university hospital in France, the HCL biobank covers a wide range of medical thematics, of which here are the main ones :

- |                  |                 |                 |
|------------------|-----------------|-----------------|
| - Oncology       | - Hepatology    | - Neurology     |
| - Cardiology     | - Immunology    | - Pediatrics    |
| - Foetopathology | - Infectiology  | - Pneumology    |
| - Hematology     | - Rare diseases | - Urogynecology |

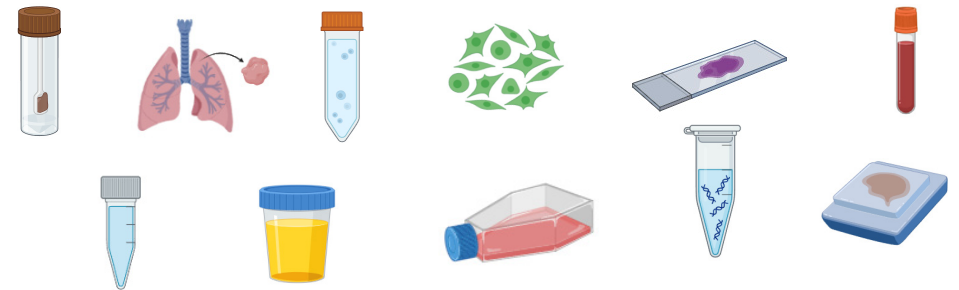
## OUR SERVICES

- Creation of biological sample collections
- Provision and transfer of biological material and associated data for research
- Biobanking services for human medical research projects (RIPH)
- Qualification of remnants sample initially used for diagnostic purposes for subsequent research (NRIPH)
- Biological expertise and services : cell culture and sorting, virus isolation, DNA extraction, histopathological examinations
- Other services upon request



## OUR SAMPLES

The HCL biobank offers a wide range of sample types, including serum, plasma, whole blood, cerebrospinal fluid (CSF), cell lines, DNA, amniotic fluid, PBMC, BMMC, FFPE tissue blocks and slides, plasmapheresis products, frozen tissue, stool, and urine.



## OUR PROCESS

Looking for samples ? Project of sample collection ?

